

# TEST REPORT

NO.: ASZ09081704201

Date: Aug 21, 2009

Page 1 of 3

**Customer:** Pepperell Crafts of Ningbo

**Address:** 1<sup>st</sup> Fangxin road, Fangqiao Industrial Zone, Jiangkou Street ,Fenghua, Ningbo, China

**Report on the submitted sample said to be:**

**Sample name:** WIGGLE EYES

**Model:** 7MM

**Item/Lot No.:** 09-004

**Material:** /

**Buyer:** PEPPERELL BRAIDING COMPANY

**Supplier:** PEPPERELL CRAFTS OF NINGBO

**Manufacturer:** PEPPERELL CRAFTS OF NINGBO

**Sample received date:** Aug 17, 2009

**Testing period:** From Aug 17, 2009 to Aug 21, 2009

**Testing Requested:**

- (1) As specified by client, to determine the Lead content in the submitted sample in accordance with Consumer Product Safety Improvement Act of 2008 (H.R. 4040) section 101--Prohibition on sale of certain products containing lead.
- (2) As specified by client, to determine DEHP(DOP)、DBP、BBP、DINP、DNOP and DIDP content in the submitted samples in accordance with Consumer Product Safety Improvement Act of 2008 (H.R. 4040) section 108--Prohibition on sale of certain products containing specified phthalates.

**Test method:**

Testing Item	Test Method	Measuring instrument
Lead (Pb)	EPA 3052	ICP-OES
DEHP(DOP)、DBP、BBP、DINP、DNOP and DIDP	EPA 3540C	GC-MS

**Conclusion:** The submitted sample complied with the requirement.

\*\*\*\*\*FOR FURTHER DETAILS, PLEASE REFER TO THE FOLLOWING PAGE(S)\*\*\*\*\*

Written by : Herry

Inspected by: Wally

Approved by: Jeanah



# TEST REPORT

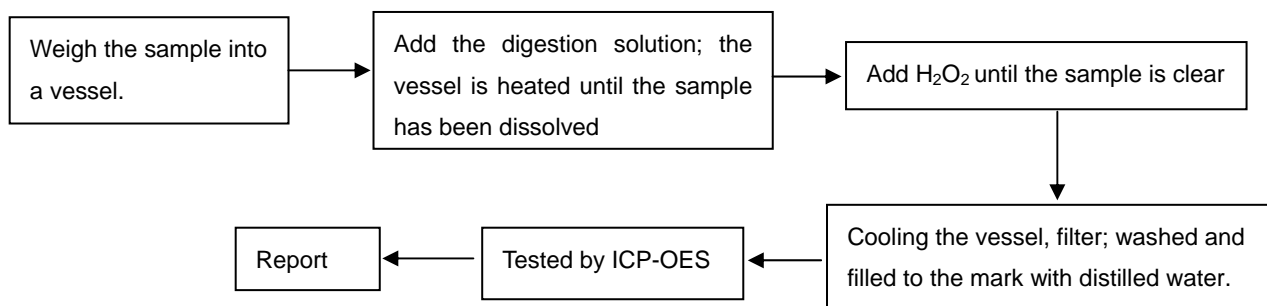
NO.: ASZ09081704201

Date: Aug 21, 2009

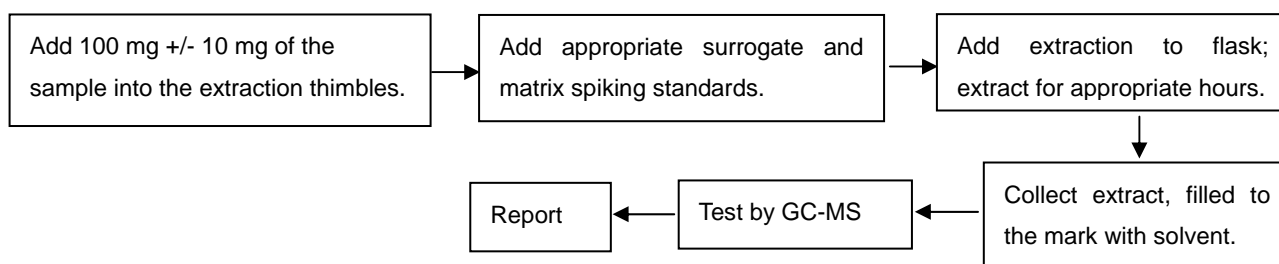
Page 2 of 3

## Test Flow:

To Determine Lead Content:



To Determine DEHP(DOP)、DBP、BBP、DINP、DNOP and DIDP Content:



## Test Results:

### (1): Lead content

Total lead content in substrate material:

Element	Unit	MQL	Limit	A	B	C
Total lead	mg/kg	5	300#	N.D.	N.D.	N.D.

### Note:

-# The limit is 300ppm, after Aug 14, 2009

The limit is 100ppm, after Aug 14, 2011

### (2): Phthalate content

Item	Unit	MQL	Limit	A	B	C
Di-iso-nonyl phthalate (DINP)	mg/kg	50	1000	N.D.	N.D.	N.D.
Di-n-octyl phthalate (DNOP)	mg/kg	10	1000	N.D.	N.D.	N.D.
Bis (2-ethylhexyl) phthalate (DEHP) (DOP)	mg/kg	10	1000	N.D.	N.D.	N.D.
Diisodecyl phthalate (DIDP)	mg/kg	50	1000	N.D.	N.D.	N.D.
Benzyl butyl phthalate (BBP)	mg/kg	10	1000	N.D.	N.D.	N.D.
Dibutyl phthalate (DBP)	mg/kg	10	1000	N.D.	N.D.	N.D.



690440320090601

# TEST REPORT

NO.: ASZ09081704201

Date: Aug 21, 2009

Page 3 of 3

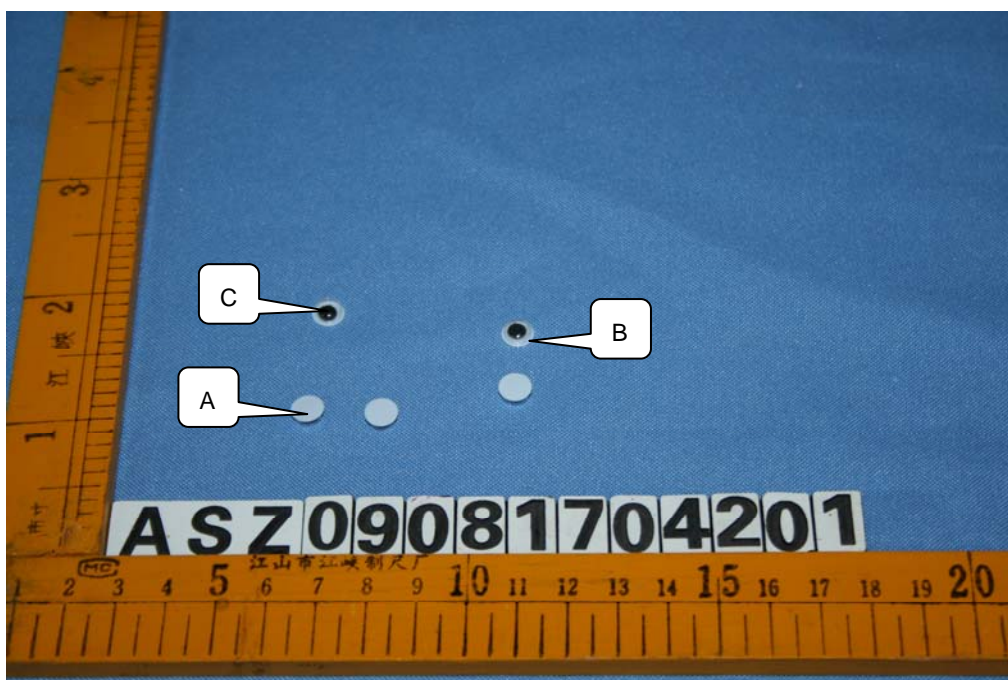
## Specimen Description:

No.	Sample name
A	7MM WIGGLE EYES IN WHITE
B	7MM WIGGLE EYES IN CLEAR
C	7MM WIGGLE EYES IN BLACK

## Note:

- Specimens, which requested to determine Lead Content, have been dissolved completely.
- mg/kg = ppm
- N.D. =Not Detected (<MQL)
- MQL=Method Quantitation Limit
- Photo is included.

## Photograph of Sample



WIGGLE EYES

\*\*\*End of Report\*\*\*



690440320090601