

TEST REPORT

NO.: ASZ09092107001

Date: Sep 23, 2009

Page 1 of 3

Customer: Pepperell Crafts of Ningbo

Address: 1st Fangxin road, Fangqiao Industrial Zone, Jiangkou Street ,Fenghua, Ningbo, China

Report on the submitted sample said to be:

Sample name: CHAIN OF EZG-2

Model: /

Item/Lot No.: /

Material: /

Buyer: PEPPERELL BRAIDING COMPANY

Supplier: PEPPERELL CRAFTS OF NINGBO

Manufacturer: PEPPERELL CRAFTS OF NINGBO

Sample received date: Sep 21, 2009

Testing period: From Sep 21, 2009 to Sep 23, 2009

Testing Requested:

As specified by client, to determine the Lead content in the submitted sample in accordance with Consumer Product Safety Improvement Act of 2008 (H.R. 4040) section 101--Prohibition on sale of certain products containing lead.

Test method:

Testing Item	Test Method	Measuring instrument
Lead (Pb)	EPA 3052	ICP-OES

Conclusion: The submitted sample complied with the requirement.

*****FOR FURTHER DETAILS, PLEASE REFER TO THE FOLLOWING PAGE(S)*****

Written by : Herry

Inspected by: Wally

Approved by: Jeanah

TEST REPORT

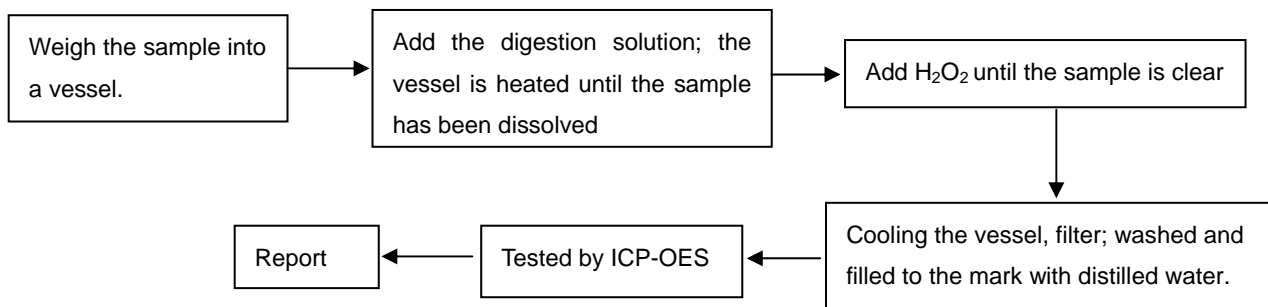
NO.: ASZ09092107001

Date: Sep 23, 2009

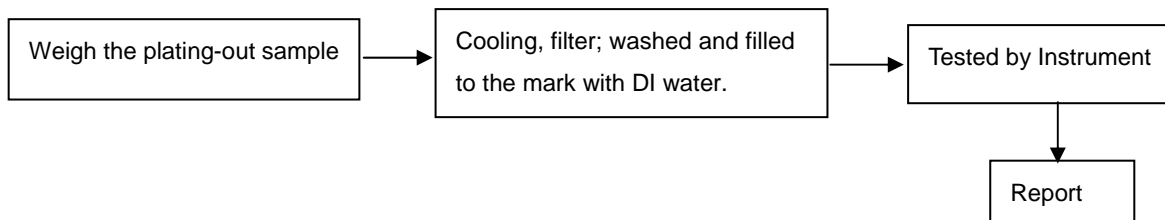
Page 2 of 3

Test Flow:

To Determine Lead Content:



To Determine Lead Content(for plating layer):



Test Results:

Total lead content in substrate material :

Element	Unit	MQL	Limit	A	B
Total lead	mg/kg	5	300#	24.8	N.D.

Note:

- # The limit is 300ppm, after Aug 14, 2009
- The limit is 100ppm, after Aug 14, 2011

Specimen Description:

- A: Metal body
- B: Plating coat

Note:

- Specimens, which requested to determine Lead Content, have been dissolved completely.
- mg/kg = ppm
- N.D. =Not Detected (<MQL)
- MQL=Method Quantitation Limit
- Photo is included.

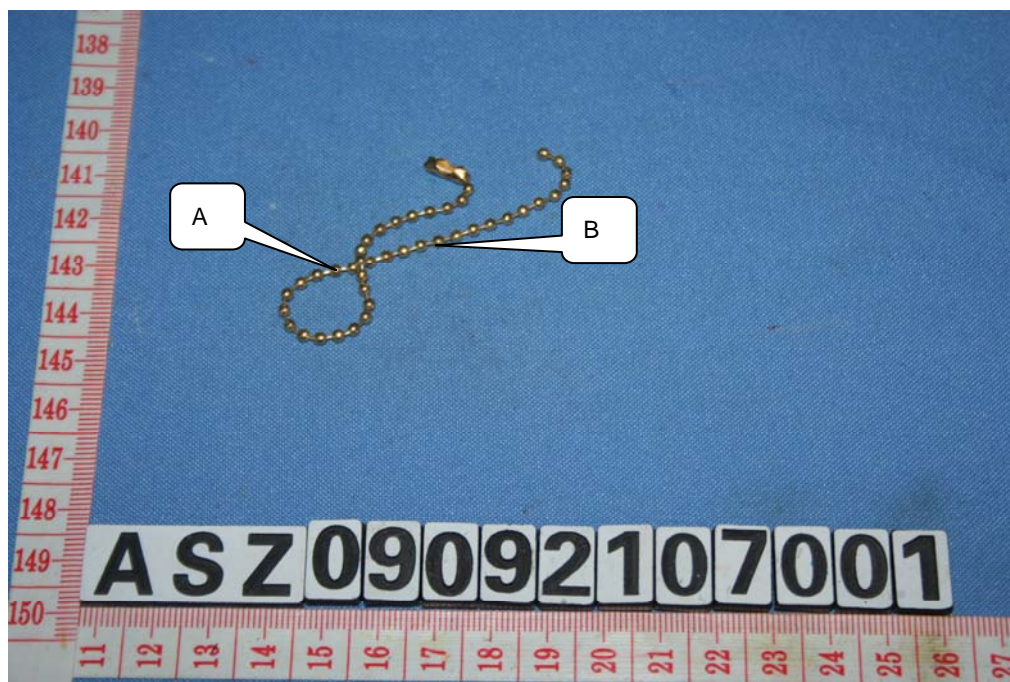
TEST REPORT

NO.: ASZ09092107001

Date: Sep 23, 2009

Page 3 of 3

Photograph of Sample



CHAIN OF EZG-2

End of Report