

# TEST REPORT

NO.: ASZ09120908301

Date: Dec 11, 2009

Page 1 of 3

**Customer:** PEPPERELL CRAFTS OF NINGBO

**Address:** 146 HENGFENG ROAD FANGQIAO INDUSTRIAL ZONE JIANGKOU STREET FENGHUA NINGBO CHINA

**Report on the submitted sample said to be:**

**Sample name:** COTTON FLOSS

**Model:** /

**Item/Lot No.:** /

**Material:** /

**Buyer:** PEPPERELL BRAIDING COMPANY

**Supplier:** PEPPERELL CRAFTS OF NINGBO

**Manufacturer:** PEPPERELL CRAFTS OF NINGBO

**Sample received date:** Dec 09, 2009

**Testing period:** From Dec 09, 2009 to Dec 11, 2009

## Testing Requested:

As specified by client, to determine the Lead content in the submitted sample in accordance with Consumer Product Safety Improvement Act of 2008 (H.R. 4040) section 101--Prohibition on sale of certain products containing lead.

## Test method:

Testing Item	Test Method	Measuring instrument
Lead (Pb)	EPA 3052	ICP-OES

**Conclusion:** The submitted sample complied with the requirement.

\*\*\*\*\*FOR FURTHER DETAILS, PLEASE REFER TO THE FOLLOWING PAGE(S)\*\*\*\*\*

Written by :



Approved by:



Inspected by:



# TEST REPORT

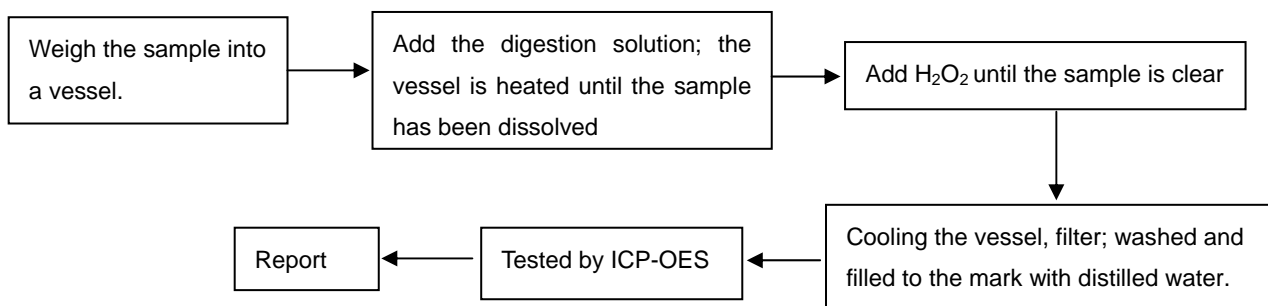
NO.: ASZ09120908301

Date: Dec 11, 2009

Page 2 of 3

**Test Flow:**

To Determine Lead Content:



**Test Results:**

**(1)Lead content:**

Total lead content in substrate material :

Element	Unit	MQL	Limit	1	2	3	4
Total lead	mg/kg	5	300#	N.D.	N.D.	N.D.	N.D.

**Note:**

-# The limit is 300ppm, after Aug 14, 2009

The limit is 100ppm, after Aug 14, 2011

**Specimen Description:**

No.	Sample name	Specimen Description
1	COTTON FLOSS	RED
2		YELLOW
3		GREEN
4		LT-BLUE
		Red Cotton Floss
		Yellow Cotton Floss
		Green Cotton Floss
		Light Blue Cotton Floss

**Note:**

- Specimens, which requested to determine Lead Content, have been dissolved completely.
- mg/kg = ppm
- N.D. =Not Detected (<MQL)
- MQL=Method Quantitation Limit
- Photo is included.

# TEST REPORT

NO.: ASZ09120908301

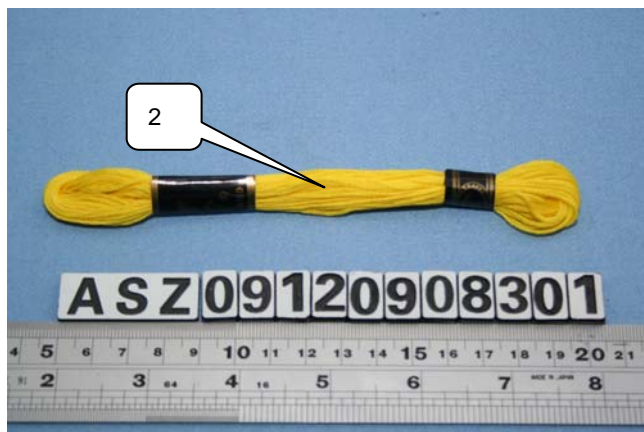
Date: Dec 11, 2009

Page 3 of 3

## Photographs of Samples



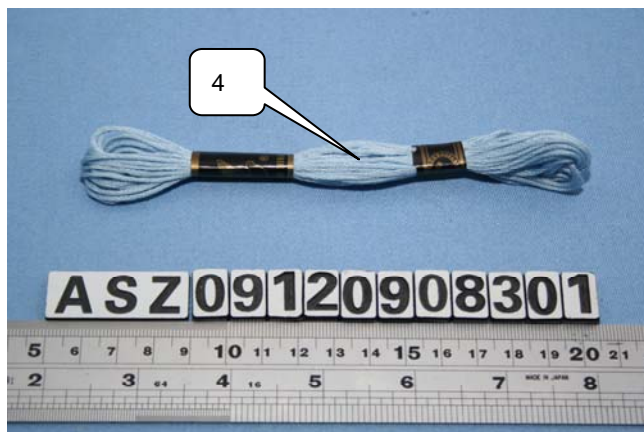
RED



YELLOW



GREEN



LT-BLUE

\*\*\*End of Report\*\*\*