

TEST REPORT

NO.: ASZ09092802601

Date: Sep 30, 2009

Page 1 of 7

Customer: Pepperell Crafts of Ningbo

Address: 1st Fangxin road, Fangqiao Industrial Zone, Jiangkou Street ,Fenghua, Ningbo, China

Report on the submitted sample said to be:

Sample name: CRAFT ERASERS

Model: See specimen description

Item/Lot No.: See specimen description

Material: Eraser

Buyer: PEPPERELL BRAIDING COMPANY

Supplier: PEPPERELL CRAFTS OF NINGBO

Manufacturer: PEPPERELL CRAFTS OF NINGBO

Sample received date: Sep 28, 2009

Testing period: From Sep 28, 2009 to Sep 30, 2009

Testing Requested:

- (1) As specified by client, to determine the Lead content in the submitted sample in accordance with Consumer Product Safety Improvement Act of 2008 (H.R. 4040) section 101--Prohibition on sale of certain products containing lead.
- (2) As specified by client, to determine DEHP(DOP)、DBP、BBP、DINP、DNOP and DIDP content in the submitted samples in accordance with Consumer Product Safety Improvement Act of 2008 (H.R. 4040) section 108--Prohibition on sale of certain products containing specified phthalates.

Test method:

Testing Item	Test Method	Measuring instrument
Lead (Pb)	EPA 3052	ICP-OES
DEHP(DOP)、DBP、BBP、DINP、DNOP and DIDP	EPA 3540C	GC-MS

Conclusion: The submitted sample complied with the requirement.

*****FOR FURTHER DETAILS, PLEASE REFER TO THE FOLLOWING PAGE(S)*****

Written by : Herry

Approved by: Jeanah

Inspected by: Wally

TEST REPORT

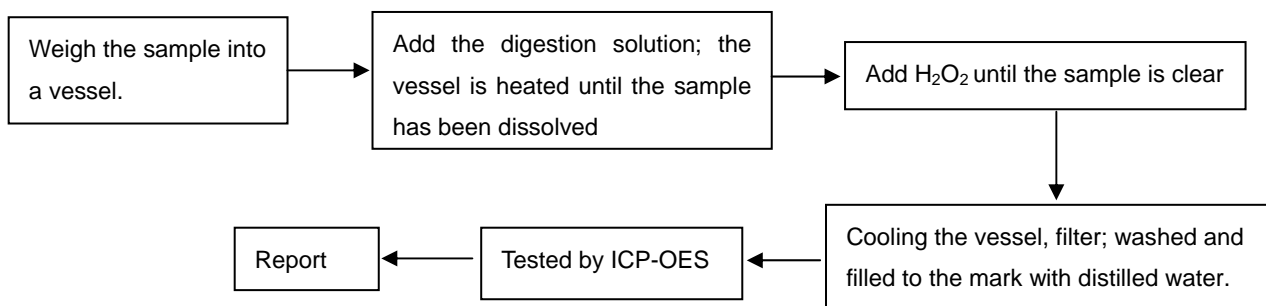
NO.: ASZ09092802601

Date: Sep 30, 2009

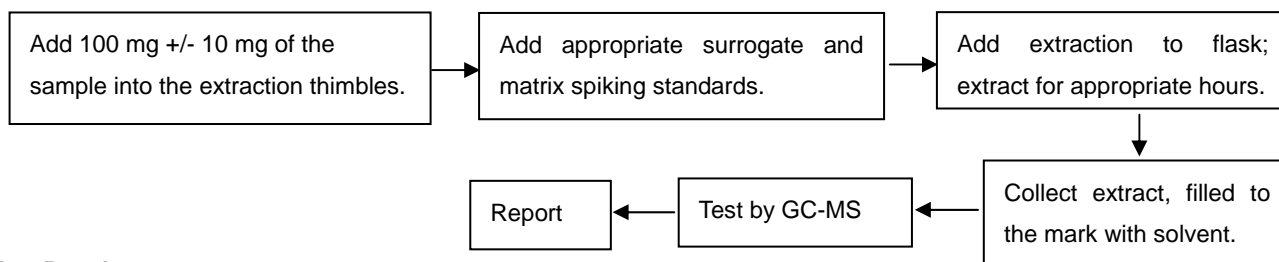
Page 2 of 7

Test Flow:

To Determine Lead Content:



To Determine DEHP(DOP)、DBP、BBP、DINP、DNOP and DIDP Content:



Test Results:

(1): Lead content

Total lead content in substrate material:

Element	Unit	MQL	Limit	1-1	1-2	1-3	1-4	1-5	2-1	2-2
Total lead	mg/kg	5	300#	N.D.	N.D.	N.D.	N.D.	N.D.	N.D.	N.D.

Element	Unit	MQL	Limit	2-3	2-4	3-1	3-2	3-3	3-4	4
Total lead	mg/kg	5	300#	N.D.	N.D.	N.D.	N.D.	N.D.	N.D.	N.D.

Element	Unit	MQL	Limit	5	6-1	6-2	6-3	6-4	6-5	6-6
Total lead	mg/kg	5	300#	N.D.	N.D.	N.D.	N.D.	N.D.	N.D.	N.D.

Element	Unit	MQL	Limit	7-1	7-2	7-3	8-1	8-2	8-3	9-1
Total lead	mg/kg	5	300#	N.D.	N.D.	N.D.	N.D.	N.D.	N.D.	N.D.

Element	Unit	MQL	Limit	9-2	10-1	10-2	11-1	11-2	11-3	12-1
Total lead	mg/kg	5	300#	N.D.	N.D.	N.D.	N.D.	N.D.	N.D.	N.D.

Element	Unit	MQL	Limit	12-2	13-1	13-2	14-1	14-2	14-3	15-1
Total lead	mg/kg	5	300#	N.D.	N.D.	N.D.	N.D.	N.D.	N.D.	N.D.

TEST REPORT

NO.: ASZ09092802601

Date: Sep 30, 2009

Page 3 of 7

Element	Unit	MQL	Limit	15-2	15-3	15-4	15-5	16-1	16-2	16-3
Total lead	mg/kg	5	300#	N.D.	N.D.	N.D.	N.D.	N.D.	N.D.	N.D.

Note:

-# The limit is 300ppm, after Aug 14, 2009

The limit is 100ppm, after Aug 14, 2011

(2): Phthalate content

Item	Unit	MQL	Limit	5
Di-iso-nonyl phthalate (DINP)	mg/kg	50	1000	N.D.
Di-n-octyl phthalate (DNOP)	mg/kg	10	1000	N.D.
Bis (2-ethylhexyl) phthalate (DEHP) (DOP)	mg/kg	10	1000	N.D.
Diisodecyl phthalate (DIDP)	mg/kg	50	1000	N.D.
Benzyl butyl phthalate (BBP)	mg/kg	10	1000	N.D.
Dibutyl phthalate (DBP)	mg/kg	10	1000	N.D.

Specimen Description:

No.	Sample name		Model	Item/Lot No.
1-1	Monster truck Eraser	Black part of Eraser	Gold master ass't	15131
1-2		Baby blue part of Eraser		
1-3		Neon magenta part of Eraser		
1-4		White part of Eraser		
1-5		Black pin		
2-1	Rocking Horse Eraser	Red part of Eraser	Gold master ass't	15125
2-2		Black part of Eraser		
2-3		Lavender part of Eraser		
2-4		Purple part of Eraser		
3-1	Ping Pong Eraser	Red part of Eraser	Silver master ass't	15123
3-2		Black part of Eraser		
3-3		Beige part of Eraser		
3-4		Yellow part of Eraser		
4	Neon Magenta Crayon Eraser		Silver master ass't	15124
5	Green Crayon Eraser		Silver master ass't	15124
6-1	Dogs Eraser	Black part of Eraser	Bronze master ass't	11351
6-2		Orange part of Eraser		
6-3		White part of Eraser		
6-4		Yellow part of Eraser		
6-5		DK. Blue part of Eraser		
6-6		Brown part of Eraser		

TEST REPORT

NO.: ASZ09092802601

Date: Sep 30, 2009

Page 4 of 7

Specimen Description:

No.	Sample name		Model	Item/Lot No.
7-1	Hammer Eraser	DK. Blue part of Eraser	Diamond ass't	15129
7-2		LT. blue part of Eraser		
7-3		Med blue part of Eraser		
8-1	Saw Eraser	Red part of Eraser	Diamond ass't	15129
8-2		White part of Eraser		
8-3		Baby blue part of Eraser		
9-1	Pliers Eraser	Green part of Eraser	Diamond ass't	15129
9-2		Grey part of Eraser		
10-1	Screw driver Eraser	Yellow Eraser	Diamond ass't	15129
10-2		LT. grey part of Eraser		
11-1	Hamburger Eraser	Brown part of Eraser	Emerald ass't	15104
11-2		DK. Brown part of Eraser		
11-3		Green part of Eraser		
12-1	French Fries Eraser	Yellow part of Eraser	Emerald ass't	15124
12-2		Red part of Eraser		
13-1	Ice cream cone Eraser	Pink Eraser	Emerald ass't	15106
13-2		Brown Eraser		
14-1	Ice cream bar Eraser	Yellow part of Eraser	Emerald ass't	15106
14-2		White part of Eraser		
14-3		Pink part of Eraser		
15-1	Cake Eraser	Red part of Eraser	Emerald ass't	15108
15-2		Green part of Eraser		
15-3		White part of Eraser		
15-4		Brown part of Eraser		
15-5		Pink part of Eraser		
16-1	Hot dog Eraser	Red part of Eraser	Emerald ass't	15104
16-2		Green part of Eraser		
16-3		Brown part of Eraser		

Note:

- Specimens, which requested to determine Lead Content, have been dissolved completely.
- mg/kg = ppm
- N.D. =Not Detected (<MQL)
- MQL=Method Quantitation Limit
- Photo is included.

TEST REPORT

NO.: ASZ09092802601

Date: Sep 30, 2009

Page 5 of 7

Photographs of Samples



Monster truck Eraser



Rocking Horse Eraser



Ping Pong Eraser



Neon Magenta Crayon Eraser



Green Crayon Eraser



Dogs Eraser

TEST REPORT

NO.: ASZ09092802601

Date: Sep 30, 2009

Page 6 of 7

Photographs of Samples



Hammer Eraser



Saw Eraser



Pliers Eraser



Screw driver Eraser



Hamburger Eraser



French Fries Eraser

TEST REPORT

NO.: ASZ09092802601

Date: Sep 30, 2009

Page 7 of 7

Photographs of Samples



Ice cream cone Eraser



Ice cream bar Eraser



Cake Eraser



Hot dog Eraser

CRAFT ERASERS

End of Report