

TEST REPORT

NO.: ASZ09082403701

Date: Aug 27, 2009

Page 1 of 3

Customer: Pepperell Crafts of Ningbo

Address: 1st Fangxin road, Fangqiao Industrial Zone, Jiangkou Street ,Fenghua, Ningbo, China

Report on the submitted sample said to be:

Sample name: CHENILLE STEM

Model: 305x6mm

Item/Lot No.: 09-001

Material: /

Buyer: PEPPERELL BRAIDING COMPANY

Supplier: PEPPERELL CRAFTS OF NINGBO

Manufacturer: PEPPERELL CRAFTS OF NINGBO

Sample received date: Aug 24, 2009

Testing period: From Aug 24, 2009 to Aug 27, 2009

Testing Requested:

As specified by client, to determine the Lead content in the submitted sample in accordance with Consumer Product Safety Improvement Act of 2008 (H.R. 4040) section 101--Prohibition on sale of certain products containing lead.

Test method:

| Testing Item | Test Method | Measuring instrument |
|--------------|-------------|----------------------|
| Lead (Pb) | EPA 3052 | ICP-OES |

Conclusion: The submitted sample complied with the requirement.

*****FOR FURTHER DETAILS, PLEASE REFER TO THE FOLLOWING PAGE(S)*****

Written by : Herry

Inspected by: Wally

Approved by: Jeanah

TEST REPORT

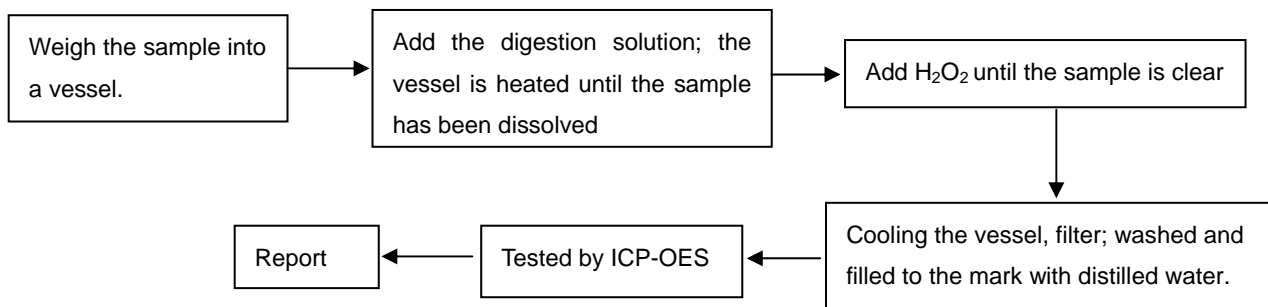
NO.: ASZ09082403701

Date: Aug 27, 2009

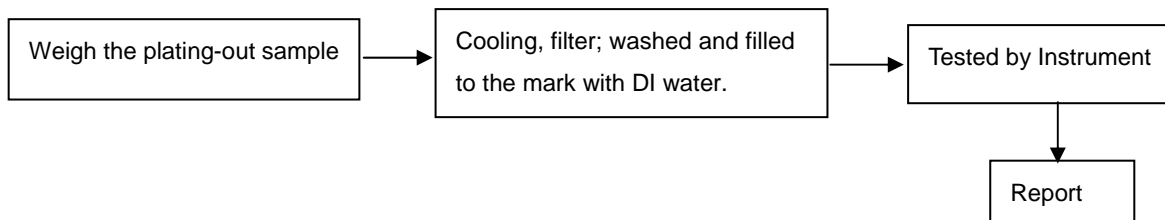
Page 2 of 3

Test Flow:

To Determine Lead Content:



To Determine Lead Content(for plating layer):



Test Results:

Total lead content in substrate material :

| Element | Unit | MQL | Limit | A | B |
|------------|-------|-----|-------|------|------|
| Total lead | mg/kg | 5 | 300# | 20.2 | N.D. |

Note:

- # The limit is 300ppm, after Aug 14, 2009
- The limit is 100ppm, after Aug 14, 2011

Specimen Description:

- A: IRON WIRE(Metal body)
- B: IRON WIRE(Plating coating)

Note:

- Specimens, which requested to determine Lead Content, have been dissolved completely.
- mg/kg = ppm
- N.D. =Not Detected (<MQL)
- MQL=Method Quantitation Limit
- Photo is included.

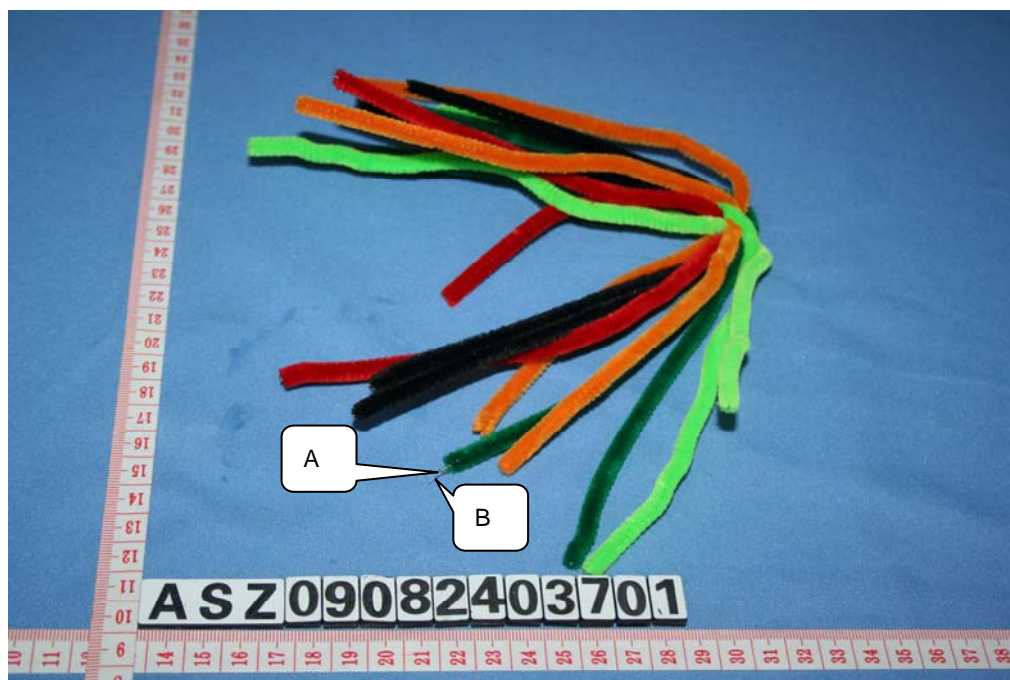
TEST REPORT

NO.: ASZ09082403701

Date: Aug 27, 2009

Page 3 of 3

Photograph of Sample



CHENILLE STEM

End of Report