

TEST REPORT

NO.: ASZ09120406201

Date: Dec 10, 2009

Page 1 of 4

Customer: PEPPERELL CRAFTS OF NINGBO

Address: 146 HENGFENG ROAD FANGQIAO INDUSTRIAL ZONE JIANGKOU STREET FENGHUA NINGBO CHINA

Report on the submitted sample said to be:

Sample name: PLASTIC PONY BEAD

Model: /

Item/Lot No.: /

Material: /

Buyer: PEPPERELL BRAIDING COMPANY

Supplier: /

Manufacturer: PEPPERELL CRAFTS OF NINGBO

Sample received date: Dec 04, 2009

Testing period: From Dec 04, 2009 to Dec 10, 2009

Testing Requested:

(1)As specified by client, to determine the Lead content in the submitted sample in accordance with Consumer Product Safety Improvement Act of 2008 (H.R. 4040) section 101--Prohibition on sale of certain products containing lead.

(2)As specified by client, to determine DEHP(DOP)、DBP、BBP、DINP、DNOP and DIDP content in the submitted samples in accordance with Consumer Product Safety Improvement Act of 2008 (H.R. 4040) section 108--Prohibition on sale of certain products containing specified phthalates.

Test method:

Testing Item	Test Method	Measuring instrument
Lead (Pb)	EPA 3052	ICP-OES
DEHP(DOP)、DBP、BBP、DINP、DNOP and DIDP	EPA 3540C	GC-MS

Conclusion: The submitted sample complied with the requirement.

*****FOR FURTHER DETAILS, PLEASE REFER TO THE FOLLOWING PAGE(S)*****

Written by :



Approved by:



Inspected by:



TEST REPORT

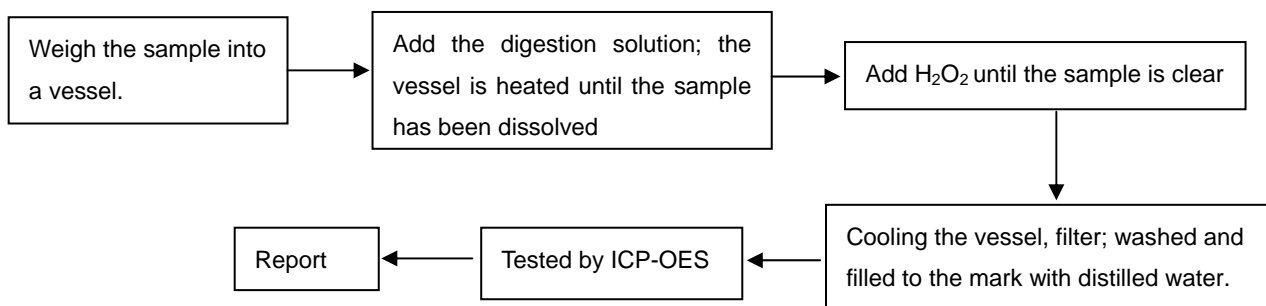
NO.: ASZ09120406201

Date: Dec 10, 2009

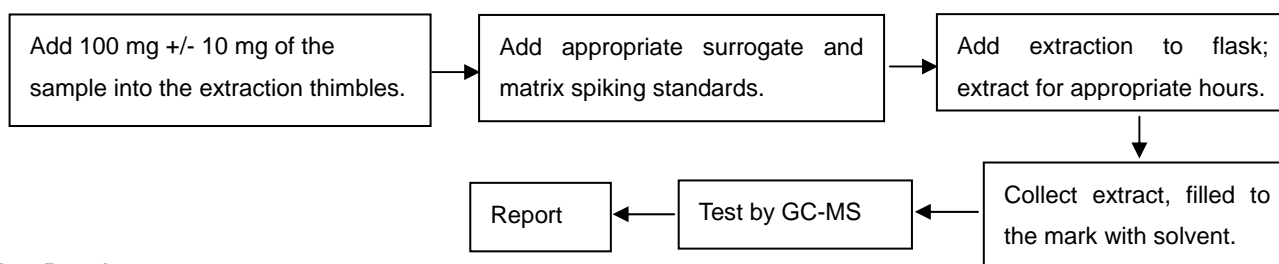
Page 2 of 4

Test Flow:

To Determine Lead Content:



To Determine DEHP(DOP)、DBP、BBP、DINP、DNOP and DIDP Content:



Test Results:

(1)Lead content:

Total lead content in substrate material :

Element	Unit	MQL	Limit	1	2	3	4
Total lead	mg/kg	5	300#	N.D.	N.D.	N.D.	N.D.

Element	Unit	MQL	Limit	5	6	7
Total lead	mg/kg	5	300#	N.D.	N.D.	N.D.

Note:

-# The limit is 300ppm, after Aug 14, 2009

The limit is 100ppm, after Aug 14, 2011

(2)phthalate content:

Item	Unit	MQL	Limit	1
Di-iso-nonyl phthalate (DINP)	mg/kg	50	1000	N.D.
Di-n-octyl phthalate (DNOP)	mg/kg	10	1000	N.D.
Bis (2-ethylhexyl) phthalate (DEHP) (DOP)	mg/kg	10	1000	N.D.
Diisodecyl phthalate (DIDP)	mg/kg	50	1000	N.D.
Benzyl butyl phthalate (BBP)	mg/kg	10	1000	N.D.
Dibutyl phthalate (DBP)	mg/kg	10	1000	N.D.

TEST REPORT

NO.: ASZ09120406201

Date: Dec 10, 2009

Page 3 of 4

Specimen Description:

No.	Sample name		Specimen Description
1	PLASTIC PONY BEAD	BLACK	BLACK PLASTIC PONY BEAD
2		WHITE	WHITE PLASTIC PONY BEAD
3		ROYAL BLUE	ROYAL BLUE PLASTIC PONY BEAD
4		RED	RED PLASTIC PONY BEAD
5		KELLY	KELLY PLASTIC PONY BEAD
6		NEON YELLOW	NEON YELLOW PLASTIC PONY BEAD
7		NEON PURPLE	NEON PURPLE PLASTIC PONY BEAD

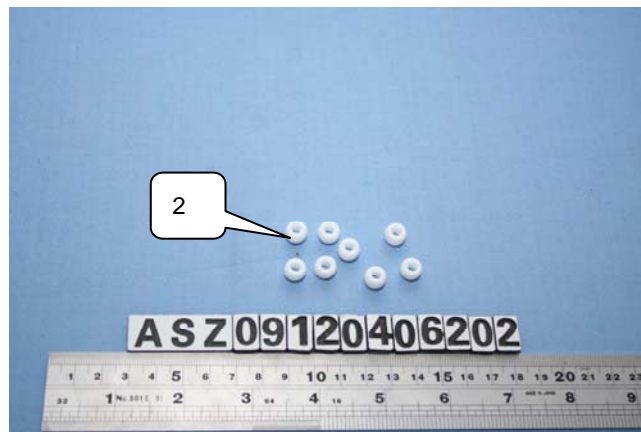
Note:

- Specimens, which requested to determine Lead Content, have been dissolved completely.
- mg/kg = ppm
- N.D. =Not Detected (<MQL)
- MQL=Method Quantitation Limit
- Photo is included.

Photographs of Samples



BLACK



WHITE

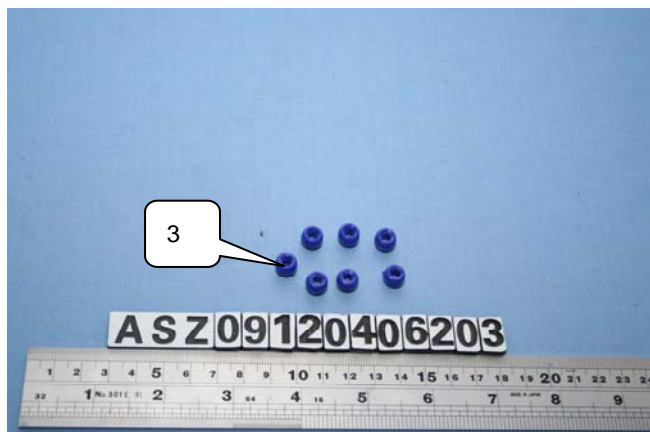
TEST REPORT

NO.: ASZ09120406201

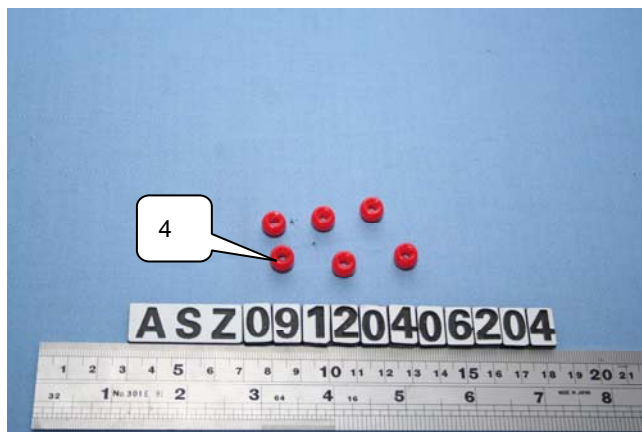
Date: Dec 10, 2009

Page 4 of 4

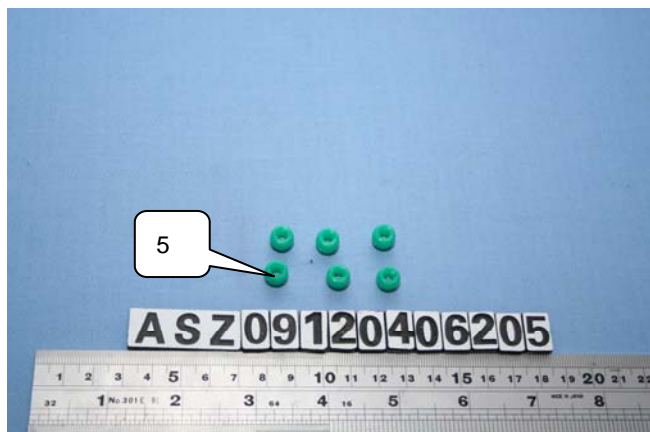
Photographs of Samples



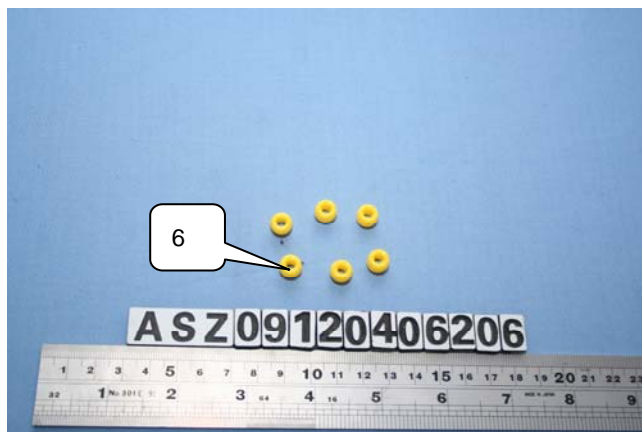
ROYAL BLUE



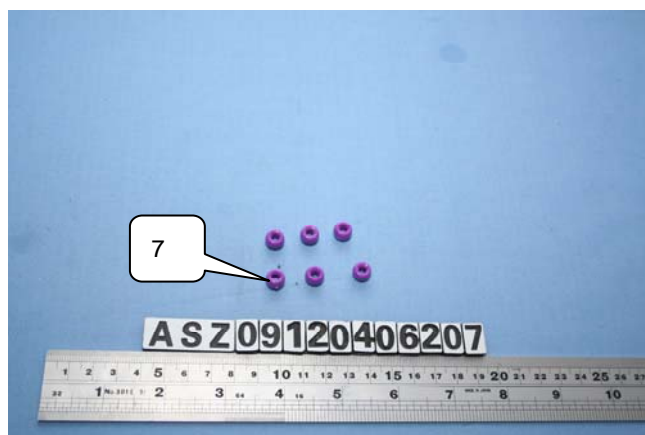
RED



KELLY



NEON YELLOW



NEON PURPLE

End of Report